

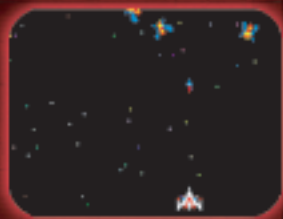


# namco museum

## 50TH ANNIVERSARY



# 14 CLASSIC ARCADE HITS



RATING PENDING  
**RP**  
CONTENT RATED BY  
**ESRB**  
Visit [www.esrb.org](http://www.esrb.org)  
for updated rating  
information.

**namco**



## NAMCO MUSEUM 50TH ANNIVERSARY™

In honor of its 50 year anniversary, Namco is creating the single largest compilation of Namco Arcade Classics ever to grace console gaming systems. The new retro menu interface allows players to explore a virtual arcade hall where each of the game's classics will be standing in its original arcade form...except this time no quarters will be required! Players will also be able to post high scores to the Xbox Live Leaderboards (for the Xbox® version only).

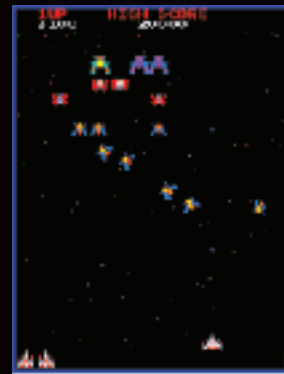
While previous versions of NAMCOMUSEUM™ contained up to 12 titles, Namco Museum 50th Anniversary™ CONTAINS 14 OF THE BEST NAMCO ORIGINAL ARCADE TITLES EVER!

### FEATURES:

- Celebrating 50 years with Namco's most popular classic titles
- **14 arcade favorites in one collection** – from well known hits like Pac-Man® and Dig Dug® to other fan favorites like Mappy and Dragon Spirit
- **3D virtual arcade interface** allows players to view and approach each classic arcade machine standing in its original form
- Featuring a list of several popular licensed songs from the 80s
- Players can post their high scores to the Xbox Live™ Leaderboards (Xbox® version only)

Game Boy® Advance version includes: Pac-Man, Ms. Pac-Man, Galaga, Dig Dug and Bosconian games.

CONTACT: **SEAN MYLETT**  
(408) 235-2131  
[Smylett@namco.com](mailto:Smylett@namco.com)



**Publisher:** Namco Hometek Inc.  
**Developer:** Backbone Entertainment  
**Release Date:** August 2005  
**ESRB:** RP (E expected)  
**Genre:** Classic Arcade  
**Multiplayer:** 1-2 Players  
**URL:** [www.namco.com](http://www.namco.com)

**Platform:** PlayStation®2 computer entertainment system  
**UPC:** 722674100298 **Stock #:** 10029  
**Platform:** Xbox® video game system  
**UPC:** 722674200097 **Stock #:** 20009  
**Platform:** Nintendo GameCube  
**UPC:** 722674300100 **Stock #:** 30010  
**Platform:** Game Boy® Advance  
**UPC:** 722674500111 **Stock #:** 50011



GAME BOY ADVANCE  
**PlayStation 2**



NAMCOMUSEUM™ & © 2001 2005 NAMCO LTD. ALL RIGHTS RESERVED. PAC-MAN® & © 1980 2005 NAMCO LTD. ALL RIGHTS RESERVED. MS. PAC-MAN® & © 1980 1982 2005 NAMCO LTD. ALL RIGHTS RESERVED. GALAGA® & © 1981 2005 NAMCO LTD. ALL RIGHTS RESERVED. GALAXIANO® & © 1979 2005 NAMCO LTD. ALL RIGHTS RESERVED. DIG-DUG® & © 1982 2005 NAMCO LTD. ALL RIGHTS RESERVED. POLE POSITION® & 1982 2005 NAMCO LTD. ALL RIGHTS RESERVED. ROLLING THUNDER™ & 1987 2005 NAMCO LTD. ALL RIGHTS RESERVED. RALLY '90 & © 1980 2005 NAMCO LTD. ALL RIGHTS RESERVED. BOSCONIAN™ & © 1981 2005 NAMCO LTD. ALL RIGHTS RESERVED. DRAGON SPIRIT™ & © 1987 2005 NAMCO LTD. ALL RIGHTS RESERVED. SKY KNOB & © 1985 2005 NAMCO LTD. ALL RIGHTS RESERVED. REVENOO® & © 1982 2005 NAMCO LTD. ALL RIGHTS RESERVED. MAPPY® & © 1983 2005 NAMCO LTD. ALL RIGHTS RESERVED. MANUFACTURED PURSUANT TO LICENSE WITH NAMCO HOLDING CORP. MICROSOFT, XBOX, XBOX LIVE, THE XBOX LOGO, AND THE XBOX LOGOS ARE EITHER REGISTERED TRADEMARKS OR TRADEMARKS OF MICROSOFT CORPORATION IN THE UNITED STATES AND/OR OTHER COUNTRIES AND ARE USED UNDER LICENSE FROM MICROSOFT. TM, ©, GAME BOY ADVANCE AND NINTENDO GAMECUBE ARE TRADEMARKS OF NINTENDO. © 2001 NINTENDO. "PLAYSTATION" AND THE "PS" FAMILY LOGO ARE REGISTERED TRADEMARKS OF SONY COMPUTER ENTERTAINMENT INC. THE RATINGS ICON IS A TRADEMARK OF THE ENTERTAINMENT SOFTWARE ASSOCIATION. ALL OTHER TRADEMARKS BELONG TO THEIR RESPECTIVE OWNERS.